

The Terra Grappler G2® is Nitto's next generation all-terrain tyre, specifically designed to tackle your everyday on- and off-road adventures, whether you're commuting to work, towing a trailer or headed up to your favourite mountain trail.

RIM SIZE: 17 - 22 INCH
SERIES: 45 - 70
WIDTH: 245 - 305
SPEED RATING: H - T

BEST FIT?

The Terra Grappler G2® suits daily drivers who like to head off the beaten track from time to time, perfect for the Toyota HiLux, Landcruiser or Prado, Nissan Patrol or Navara, Mitsubishi Pajero or Triton, Ford Ranger or Everest and Isuzu D-Max or MU-X.

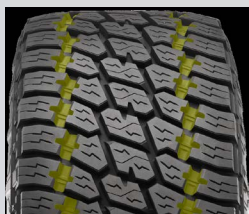


ALL-TERRAIN 4X4 TYRE



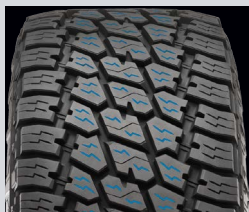
DUAL SIDEWALL DESIGNS

Each Grappler has two sidewall designs so you can choose how your tyres look. On the Terra Grappler G2®, one side features an aggressive version of the original Terra Grappler thunderbolt while the other displays a new blade design.



RIGID COUPLING JOINTS

Reinforced coupling joints between the outermost and central tread blocks minimise excessive tread flex, maximising traction and steering response while encouraging even wear.



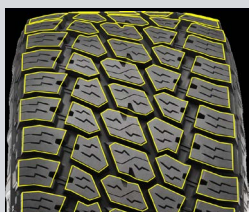
FULL-DEPTH SIPES

Siping helps resist hydroplaning by cutting through pockets of water on road surfaces. Full-depth siping equal to the tread depth offers additional biting edges in wet conditions while also maintaining tread design as the tyre wears.



SHOULDER LUGS

Staggered shoulder lugs provide additional biting edges in off-road conditions, especially in deep sand and loose dirt. Furthermore, new sidewall designs connect these lugs from the shoulder block down to the middle of the sidewall surface for additional strength.



VARIABLE-PITCH TREAD BLOCKS

Computer analysis of tread block arrangements has allowed Nitto's engineers to minimise the tyre noise normally heard while driving at highway speeds.



Tyre Size	Load Index/Speed Symbol	Ply Rating	Tread Depth (mm)	Inflated Dimensions		Loaded Dimensions			Measuring Rim Width (in)	Approved Rim Widths (in)	Revs /km
				Overall Dia. (mm)	Overall Width (mm)	Static Radius (mm)	Static Width (mm)	Dynamic Radius (mm)			
245/65R17	111T	N/A	10.0	750	248	340	270	364	7.0	7.0-8.5	437
265/65R17	116T	N/A	10.2	776	272	350	296	377	8.0	7.5-9.5	423
265/70R17	115T	N/A	10.4	804	272	361	296	390	8.0	7.0-9.0	408
255/55R18	109H	N/A	10.1	737	265	338	289	358	8.0	7.0-9.0	445
265/60R18	114T	N/A	10.2	775	272	353	296	376	8.0	7.5-9.5	423
285/60R18	120S	N/A	10.8	799	292	362	318	388	8.5	8.0-10.0	410
265/50R20	111S	N/A	10.6	774	277	358	302	376	8.5	7.5-9.5	424
285/50R20	116S	N/A	10.8	794	297	366	324	385	9.0	8.0-10.0	413
305/50R20	120S	N/A	11.0	814	316	373	344	395	9.5	8.5-11.0	403
275/55R20	117T	N/A	10.3	810	284	372	310	393	8.5	7.5-9.5	405
305/55R20	116S	N/A	10.6	844	316	385	344	410	9.5	8.5-11.0	388
285/45R22	114H	N/A	10.8	815	285	379	311	396	9.5	9.0-10.5	402
305/45R22	118S	N/A	11.0	833	303	386	330	404	10.0	9.5-11.5	394