

The Mud Grappler® provides incredible off-road traction and can handle anything you throw at it across a wide range of terrains and tyre pressures.

**RIM SIZE:** 15 - 20 INCH  
**DIAMETER:** 33 - 38 INCH  
**WIDTH:** 12.0 - 15.5 INCH  
**SPEED RATING:** P - Q

### BEST FIT?

The Mud Grappler® suits the plus-sized demands of serious off-roaders seeking extreme diameter tyres with an effective sidewall ratio, perfect for a heavily-modified Toyota HiLux, Landcruiser or Prado, Nissan Patrol or Navara, Mitsubishi Pajero or Triton, Ford Ranger or Everest and Isuzu D-Max or MU-X.

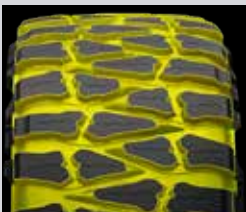


## EXTREME-MUD-TERRAIN LIGHT-TRUCK 4X4 TYRE



### DUAL SIDEWALL DESIGNS

Each Grappler has two sidewall designs so you can choose how your tyres look. On the Mud Grappler®, one side has lizard skin side lugs and the other has plain side lugs.



### HIGH VOID RATIO

A high void ratio between the tread blocks efficiently clears mud and dirt from the pattern to provide excellent traction in extreme terrain.



### AGGRESSIVE SIDEWALL LUGS

The Mud Grappler® has one of the most aggressive and functional sidewall designs on the market. Massive sidewall lugs provide additional biting edges, which is especially helpful in rocky terrain. The additional lug depth also provides puncture resistance.



### PUNCTURE RESISTANCE

3-ply polyester sidewall construction and a high-strength steel belt tread package offers exceptional puncture resistance.



### OFF-ROAD TRACTION

The Mud Grappler's® tread blocks are arranged to keep part of the lugs biting the ground at all times, maximising traction in any terrain.

# NITTO

FUELED BY ENTHUSIASTS

# Mud Grappler

PRODUCT DATA SHEET

Version 1.3



Tyre Size	Load Index/ Speed Symbol	Ply Rating	Tread Depth (mm)	Inflated Dimensions		Loaded Dimensions			Measuring Rim Width (in)	Approved Rim Widths (in)	Revs /km
				Overall Dia. (mm)	Overall Width (mm)	Static Radius (mm)	Static Width (mm)	Dynamic Radius (mm)			
33x13.50R15	109Q	6	16.7	832	345	366	376	404	11.0	9.5 - 12.0	394
38x15.50R15	123P	6	16.7	956	395	445	420	464	12.0	11.0 - 13.0	343
LT315/75R16	127P	10	16.4	888	327	413	341	431	8.5	8.0 - 10.0	369
33X12.50R20	114Q	10	16.7	837	325	389	330	406	10.0	8.5 - 11.0	392
35X12.50R20	121Q	10	16.7	890	330	414	345	432	10.0	8.5 - 11.0	368
37X13.50R20	127Q	10	16.7	934	345	420	376	453	11.0	8.0 - 11.0	351